

# Newsletter



CARY CHINESE SCHOOL  
凯瑞中文学校

## 重要通知 Announcements

上周出现两件事向家长们通报： 1. 课间有学生在饮水机旁玩水，并且故意将饮水口转向朝外的方向，导致饮水机旁的地面有大量积水。本周六学校将安排人员在课间值守，一旦发现有玩水的学生将处以警告处分。屡次不改的通知家长。请家长们配合教育孩子们饮水机的真正用处，避免安全隐患，节约水资源。 2. 上周有一年级学生在课上吃口香糖，并且将口香糖吐到了桌子上。再次请家长提醒学生勿将口香糖带入校园！口香糖是有安全隐患的，而且不正确处理的话将给清洁带来极大困难。如发现违反规定，并且由于口香糖的问题给清洁带来困难者学校将通知家长来校清理，同时账号罚款\$50。 **谢谢家长们理解和配合！**

Parents, there were two incidents happened last week:

1. A student was playing with water next to the drinking fountain during recess, and deliberately turned the drinking spout outward, causing a large amount of water to accumulate on the ground next to the drinking fountain. This Saturday, the school will arrange personnel to be on duty during recess, and any students found playing with water will be given a warning and parents will be notified if it happens repeatedly. Parents please inform your students the proper usage of drinking fountains to avoid safety hazards and save water resources.

2. Last week a first grader ate gum in class and spit it out on the table. Once again, parents are asked to remind students not to bring chewing gum into school! Chewing gum is a safety hazard and can make cleaning extremely difficult if not handled correctly. If found to be in violation of the rules and causing difficulty in cleaning due to chewing gum, the school will notify parents to come to the school to clean up, and a fine of \$50 will be imposed on the account. **Thank you parents for your understanding and cooperation!**

## Newsletter Highlights

Announcements

Adopt a Spot Event

Volunteering



## 家长值勤 Parent's duty

8:20 - 9:10AM & 9:50 - 10:00AM  
CHL PREK A CLASS PARENTS  
中文PREK A班宋琳老师班家长



本学期已经过半，学生们逐渐熟悉了教室，现在需要义工送到班级的学生数量越来越少了，感谢家长们的支持和理解；也十分感谢现场来帮忙的PTA义工们！再次提醒大家：

1. 请提前出门，避免迟到的情况发生。迟到15分钟以上的学生将在大厅等待，课间再返回教室。
2. 注意交通安全，遵守规则和交通执勤队伍的指挥。
3. 请成人课下课的家长离开教学区，不要在教学楼内逗留。

Halfway through this semester, the students have gradually become familiar with the classroom. Now the number of students who need volunteers to send to the class is getting smaller and smaller. Thank you to the parents for their support and understanding; I am also very grateful to the PTA volunteers who came to help! Remind everyone again:

1. Please go out in advance to avoid being late. Students who are more than 15 minutes late will wait in the lobby and return to the classroom between classes.
2. Pay attention to traffic safety, obey the rules and the instructions of the traffic duty team.
3. Parents who have finished the adult class are asked to leave the teaching area and not stay in the teaching building.

## 高中生志愿者当日注册 High school volunteering sign-up

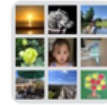


NOVEMBER 11, 2023



# Newsletter

*Join WeChat Group!*



Group: Environmental  
Volunteering



Valid until 11/15 and will update upon joining group



## CCS Adopt A Spot Event

**A Free Environmental Volunteering Program for CCS Families**

**When: 14:00 - 16:00 Sunday, November 12**

**Where: Mills Park**

**Participant#: 18-20 volunteers**

A clean and litter-free community is fundamental to upholding the values and beauty of the Town of Cary. The Adopt a Spot program was created to engage citizens in maintaining clean streets, parks, neighborhoods, streams, and natural areas throughout the Town. Cary Chinese School has now been assigned with Mills Park as the adopted location. We agree to clean litter from the adopted area on a bimonthly basis (four times per year) for a two-year period per the requirements outlined in the program.



NOVEMBER 11, 2023



赞助商

OUR SPONSORS

Thank you!



CARY FAMILY  
EYE CARE



ELITE PATH  
COLLEGE COUNSELING

Will Dixon

Founder and Managing Director

919-358-8718

wdixon@elitepathedu.com



Buy or Sell Houses?

Call Maggie Li Realtor®

919-656-5688

COLDWELL BANKER  
ADVANTAGE

原美国公校教师，深谙学区房



TRIANGLE  
BADMINTON & TABLE TENNIS



Praus Dentistry  
DENTISTRY WITH INTEGRITY



NMLS#254895

Cathy Yang

919-561-3458

Loan Officer

cathy.yang@gmccloan.com

NMLS#2755746

North Carolina#1-206363

www.gmccloan.com

licensed in 48 States with Multiple Business Locations  
Corporate Headquarter: 1350 Bayshore Hwy, STE 740  
Burlingame, CA 94010

